



HOYT SHERMAN PLACE THEATER

1501 Woodland Avenue
Des Moines, Iowa 50309
515.244.0507
www.hoytsherman.org

Technical Specifications (as of 3/8/21)

Technical Director

Josh Jepson
515-822-1550 cell
jepson@hoytsherman.org

Seating Capacity

Main: 776
Box: 38
Balcony: 438

Loading Dock

East Side:

48" dock height to 5ft landing
15ft push (10% grade incline) through 9' x 8'2" dock door
Shore power hookup available in NE corner of parking lot
and next to loading dock. Water hook up available as well.
All Shore hookups are Nema 14-50R

West Side:

Ground level loading platform 5' from stage
6' x 39" ramp, 16' x 39" ramp, risers and decking to load to
Double wide stage doors for access (8'4" total width, 10' total height)
Two Shore hookups available as well as water hook up

Stage Dimensions

Back wall to proscenium = 24'
Stage right wall to stage left wall = 52" Proscenium to front of pit cover =
5'6" Proscenium height = 22' 6"
Proscenium width = 34' 4"

Stage Floor

Hard wood sub floor and double-tempered masonite

House Fly System

48' to the grid
26 hemp and sand bag line sets
3 drill operated winches (electrics)

Soft Goods

3 sets of side tabs = 6'-19'

4 sets of legs = 4'-19'

1 mid stage traveler = 36' 6"-19'

1 full stage black = 36' 6"-19'

1 valance (scalloped) movable up or down

1 main curtain (travel or guillotine)

House hang plot upon request

Pit Cover

Stage Right

Removable upon request (extra labor charge required)

2 stair units (can be placed anywhere along the front edge of the pit cover)

Company Switches

Stage left 20' of the stage is a catwalk with 200 amp three phase for sound

Stage left 20' of the stage is a catwalk with 400 amp three phase for lighting

Storage

USER is a 20'x 24' room that is just feet from the east side entrance

Dressing Rooms

Stage left upstairs is a large chorus w/ bathroom attached

Stage left downstairs is a medium chorus w/ bathroom in the hall

Stage left downstairs is a star w/ sink but shares bathroom w/ chorus

Stage right downstairs star w/ adjacent bathroom

2 Star dressing rooms behind stage, each with private bathroom & shower

1 Laundry room with additional shower

Wifi

SSID: WiHoy2

Password: Hoytsherman1501

PA Information

75' from stage house right of center

2- flown of Meyer Leopard stage right and stage left

9 - top boxes and 2 subs per side

1 – Behringer X32 FOH Desk

Hearing impaired units available

House Lighting

288 channels of ETC sensor dimming

1 - ETC Element 60/500

48 - ETC par 64 (on stage)

8 - S4 12 circuit mutipar strips (on stage)/cyc lighting

24 – Strand Lekos (front of house)

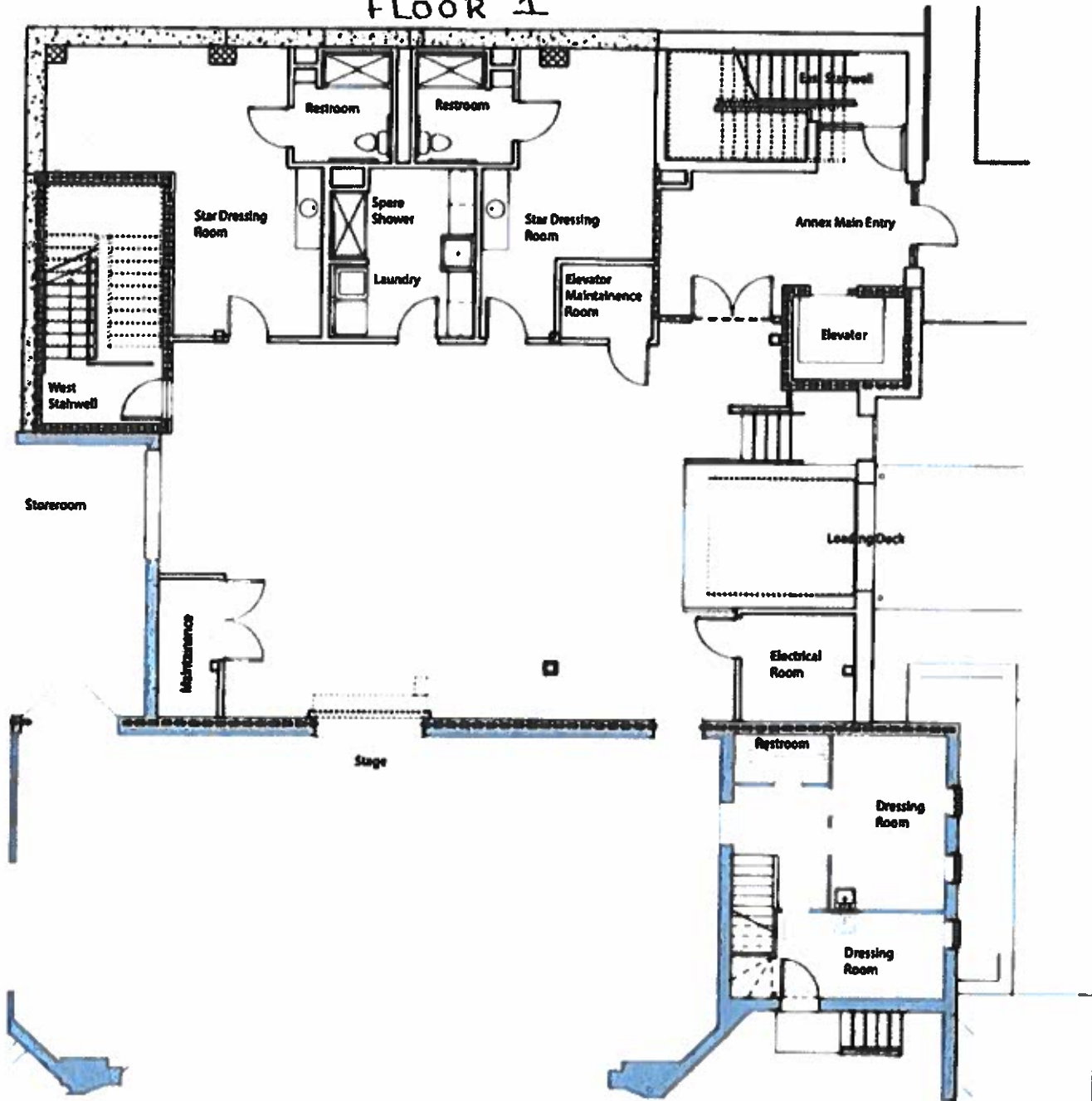
12-19 degree S4 Lekos (box booms house right and house left)

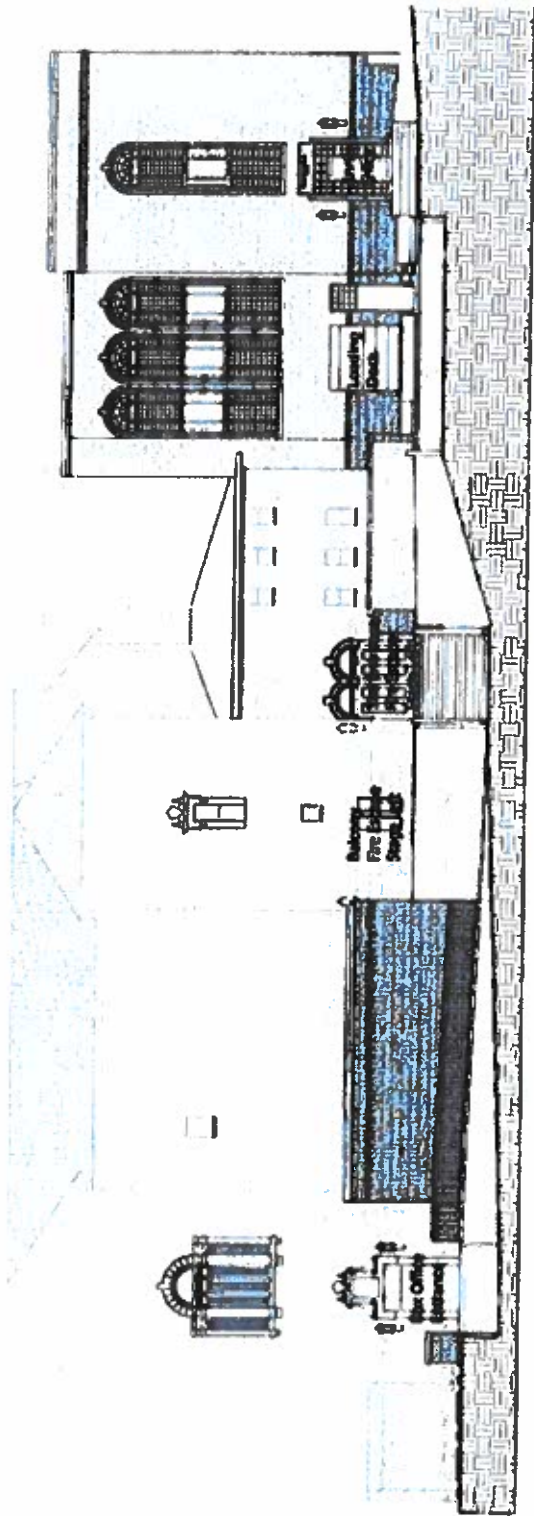
2-lycian 1272 Starklite II

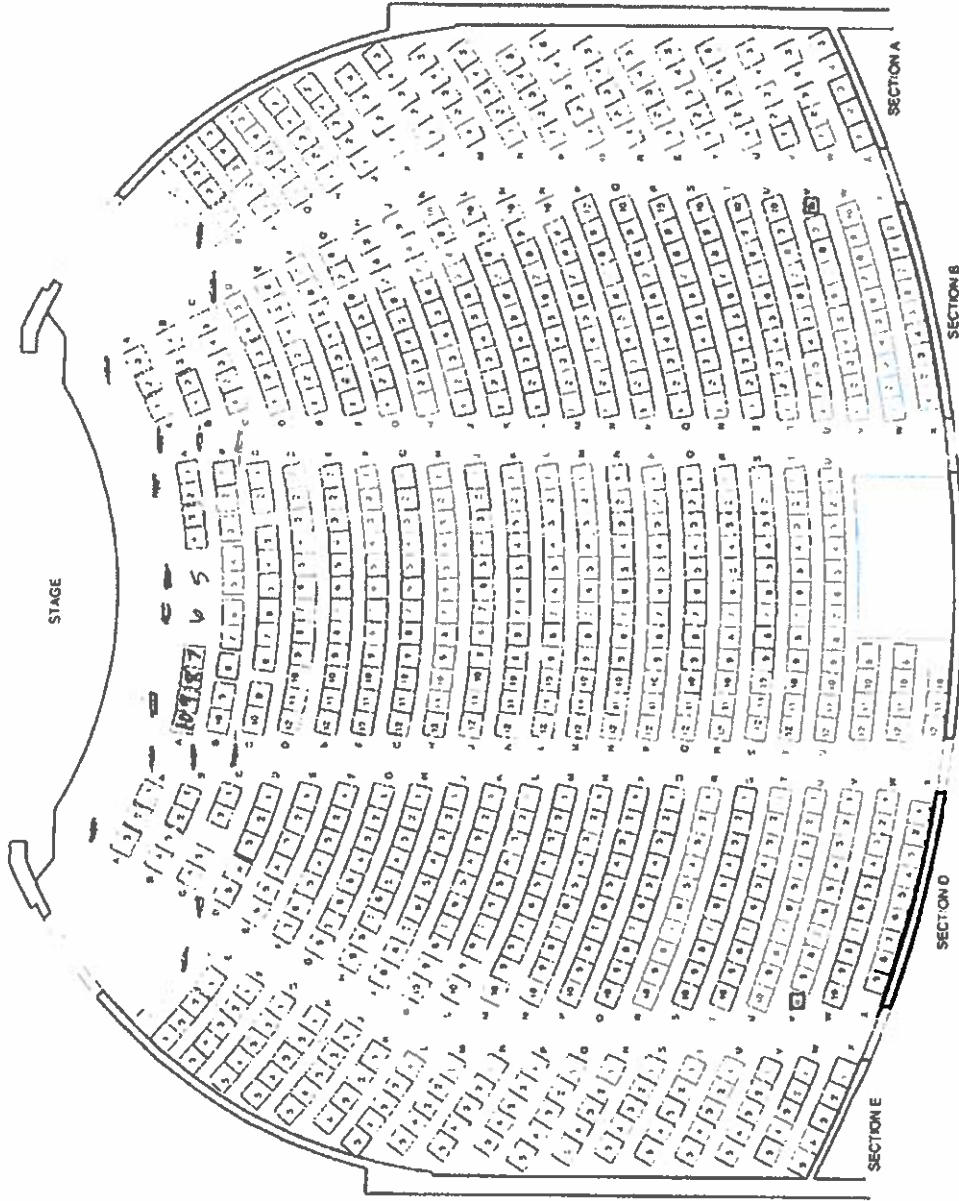
Spot Position

Balcony center back 2 rows (BALC- Sec. C. Row L-M)

FLOOR 1

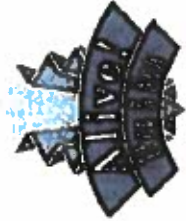


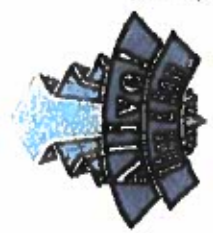
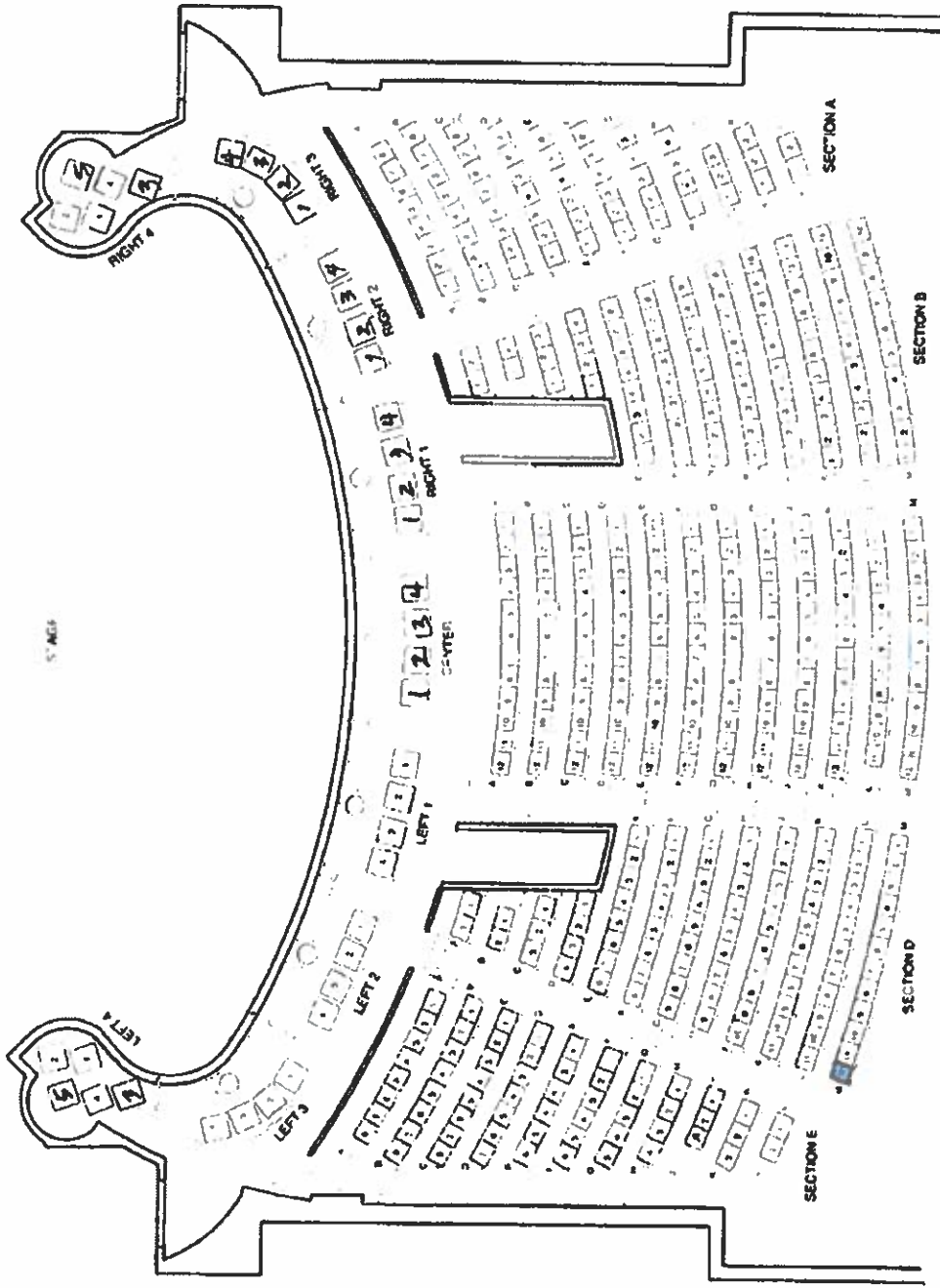




MAIN FLOOR

Hoyt Sherman Place





Hoyt Sherman Place

BALCONY